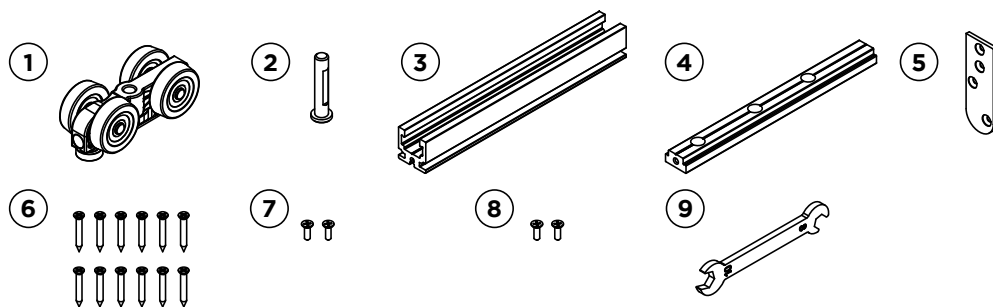
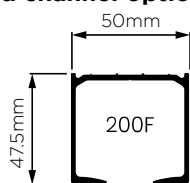


Pack contents

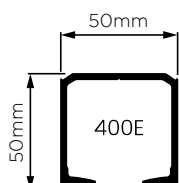
1. 2 x Hanger
2. 2 x Hanger Bolt
3. 2 x Hanger plate retainer
4. 2 x Hanger plate
5. 2 x Long cover
6. 12 x Fixing screws
7. 2 x Screw 8G x 1/2"
8. 2 x Screw M4 x 12mm
9. 1 x Spanner



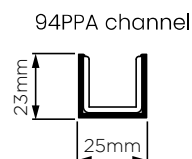
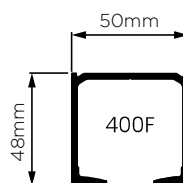
Track and channel options



200F for 200kg systems

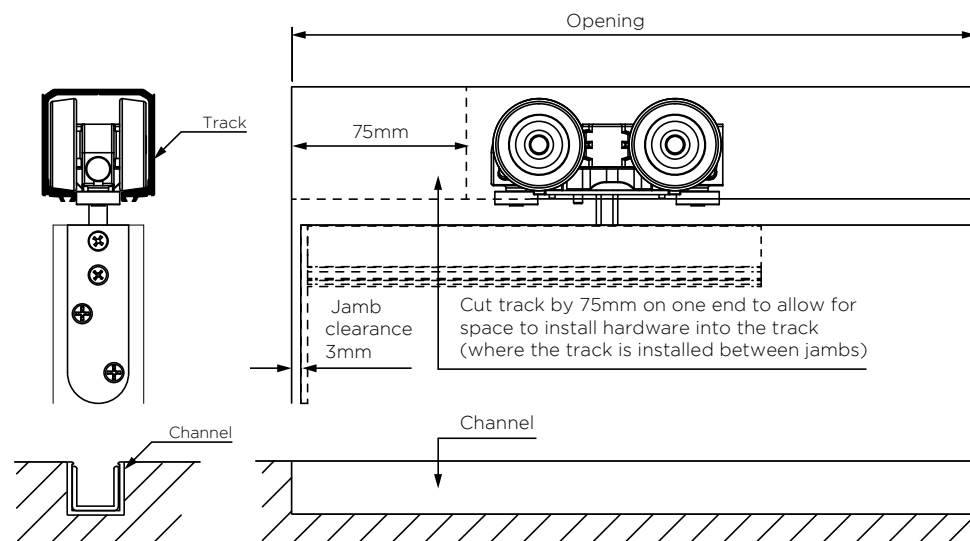


400E and 400F for 400kg systems

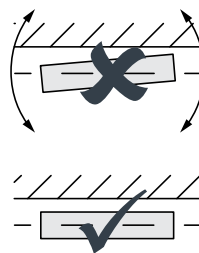


1. Track and channel installation

Fix track with screws starting with 35mm from each end and then at 400mm intervals



Ensure track is installed parallel to the wall

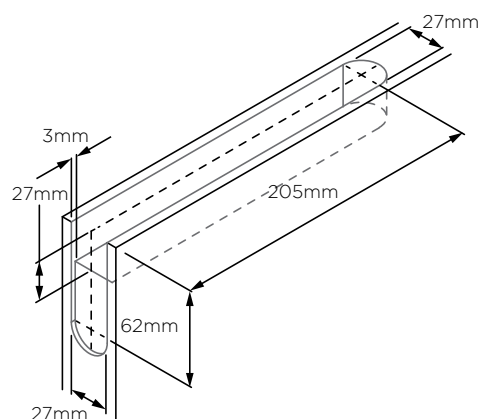


Once track and channel are installed, ensure that all dust, swarf or contamination is removed from the inside of the track before fitting any hardware.

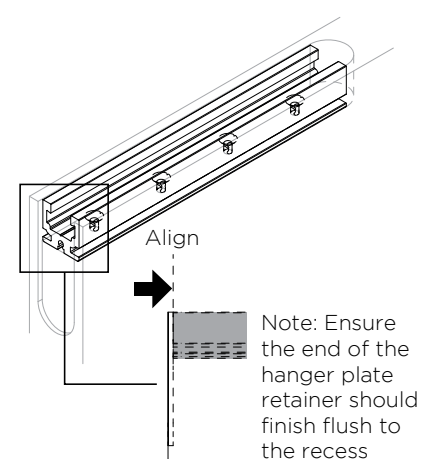
If installing 94PPA, cut length to opening, countersink and fix screws 35mm from each end then fix at 400mm intervals. Install 94P polypropylene infill last.

2. Panel preparation

Prepare the panel for the brackets

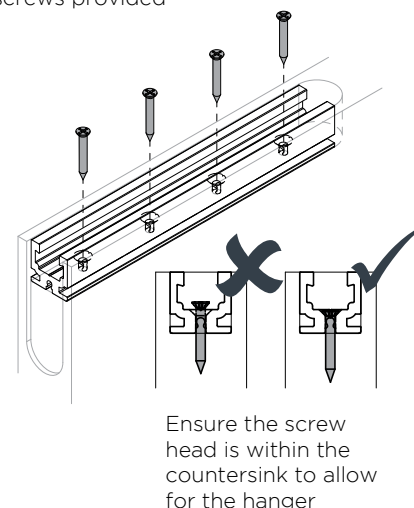


Use the hanger plate retainer as a template to mark and pre-drill holes for the fixing screws



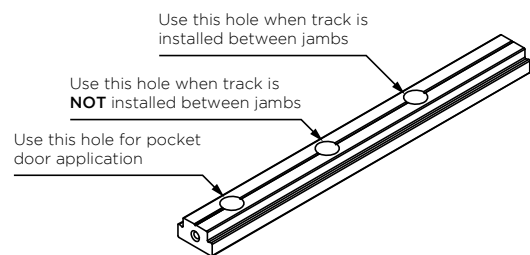
Note: Ensure the end of the hanger plate retainer should finish flush to the recess

Fix bracket with fixing screws provided

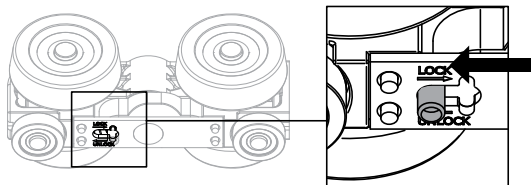


3. Hanger assembly

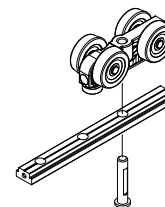
Ensure the correct hole is used for the application



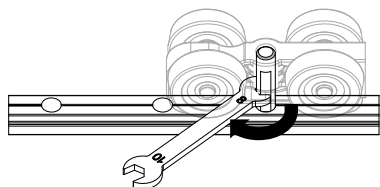
3.1 Check the hanger lock and ensure it is in the unlocked position



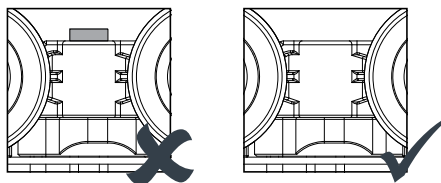
3.2 Assemble the hanger, plate and bolt



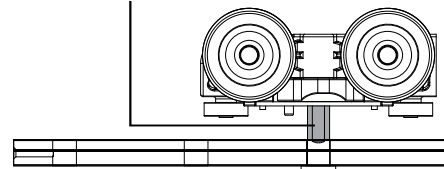
3.3 Use the spanner to turn the bolt.



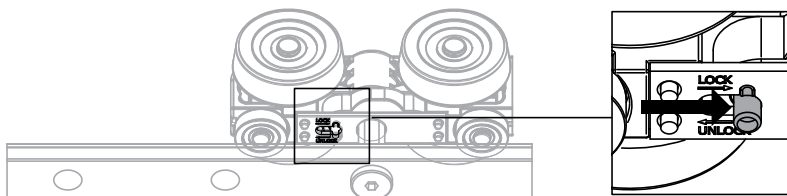
Ensure the bolt end is flush to the top of the hanger.



Ensure flat surface of the bolt is facing the front after height adjustment is completed



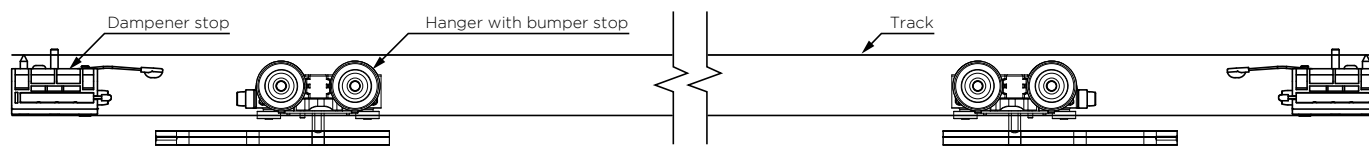
3.4 Lock the hanger assembly before attaching to the panel



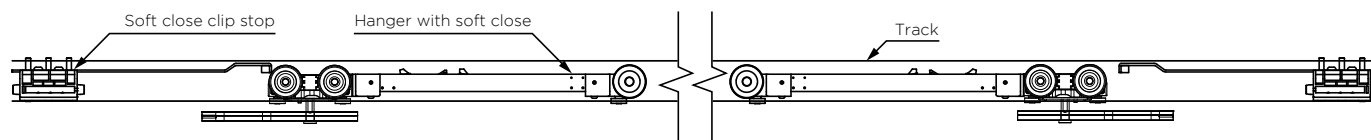
4. Hardware installation

Insert hardware into the track following the appropriate instructions to install soft close/s or dampener stop/s as required

Side elevation shown with dampener stops used on both ends

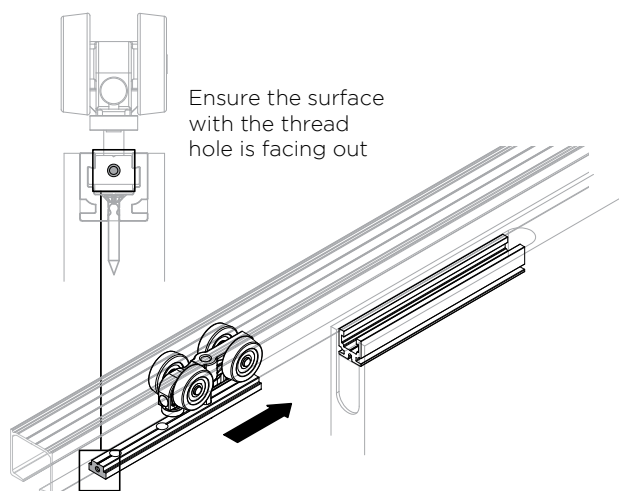


Side elevation shown with soft closers used on both ends

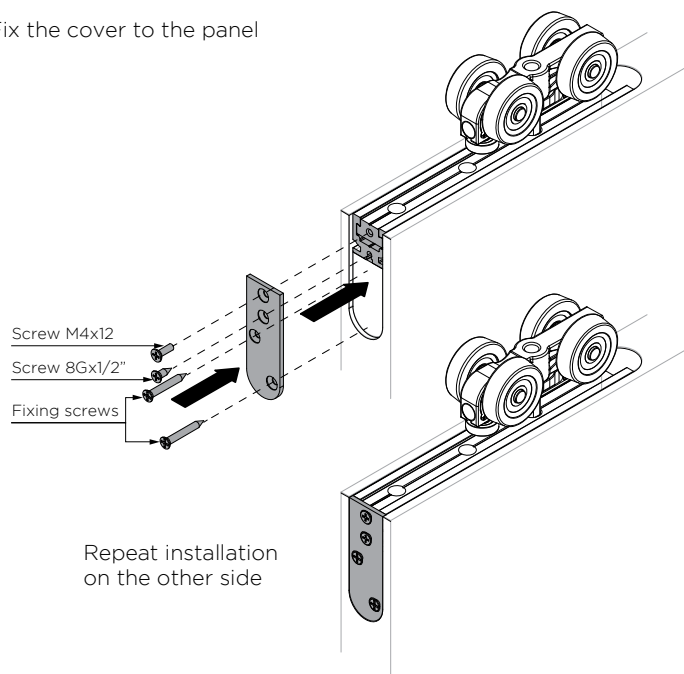


5. Attach panel to hanger

Carefully lift the door panel with the hanger assembly. Line up the hanger assembly to the hanger plate retainer and slide in.



Fix the cover to the panel

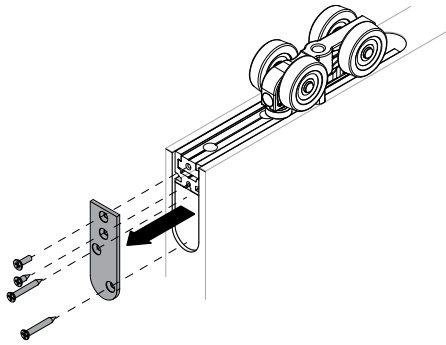


6. Height adjustment

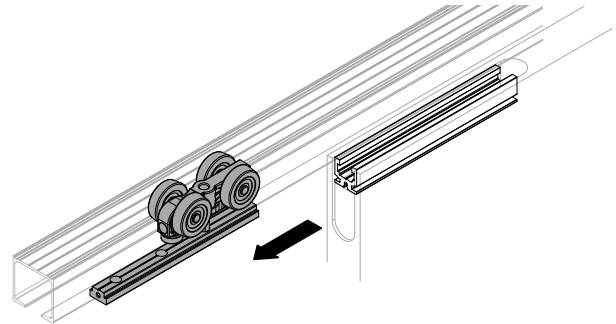
Note: If the clearance between the track and the panel is more than 5mm, do not remove the panel.

Perform the step below if the clearance is less than 5mm.

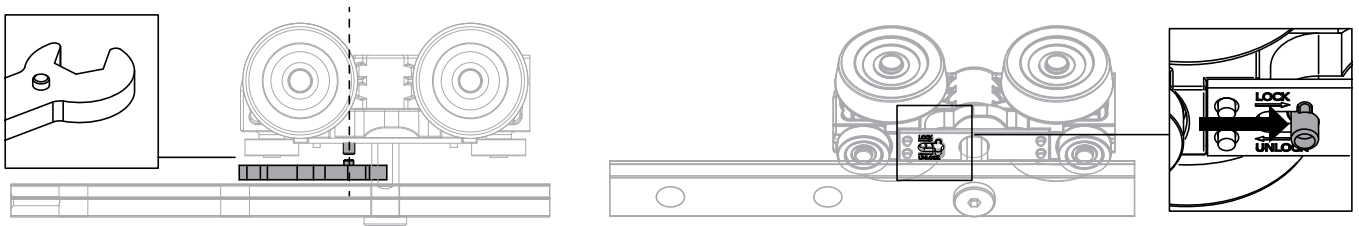
6.1 Remove the end cap.



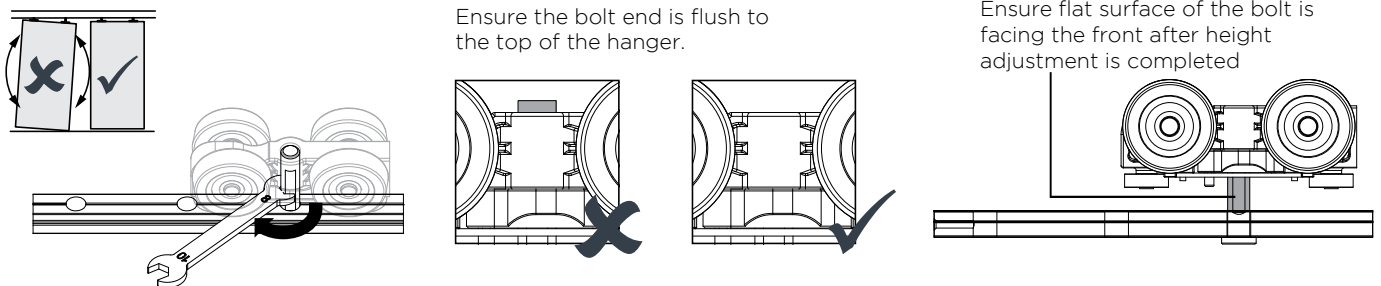
6.2 Slide out the hanger assembly out of the retainer



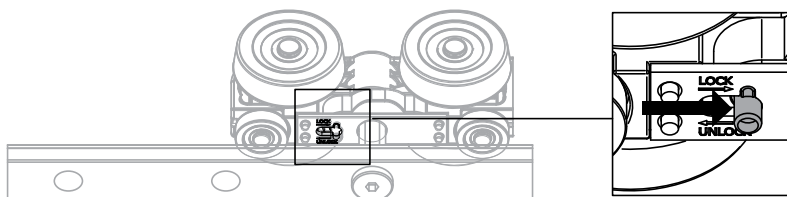
6.3 Unlock the bolt by moving the switch to the unlocking position. Line up peg on the spanner to the locking button and press.



6.4 Adjust the height by using the 8mm end of the spanner to rotate the bolt. Anti-clockwise to raise and clockwise to lower the panel



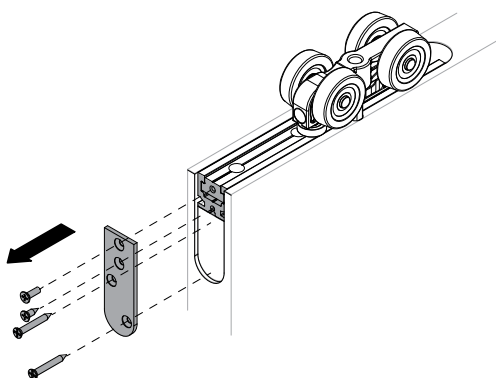
6.5 Lock the bolt by moving the switch to the locking position



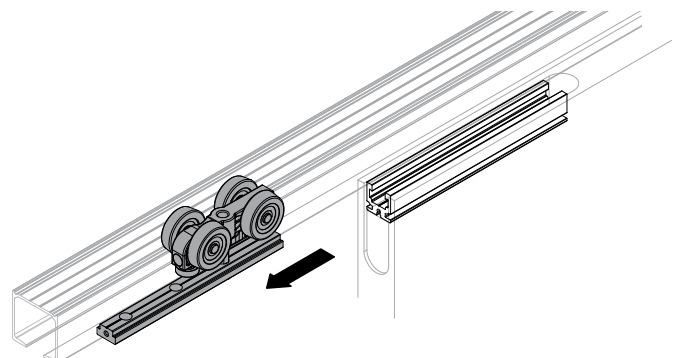
6.6 Reassemble the end cap and hanger assembly from the panel as per steps 6.1 and 6.2

7. Release the panel

7.1 Remove the end cap from the panel

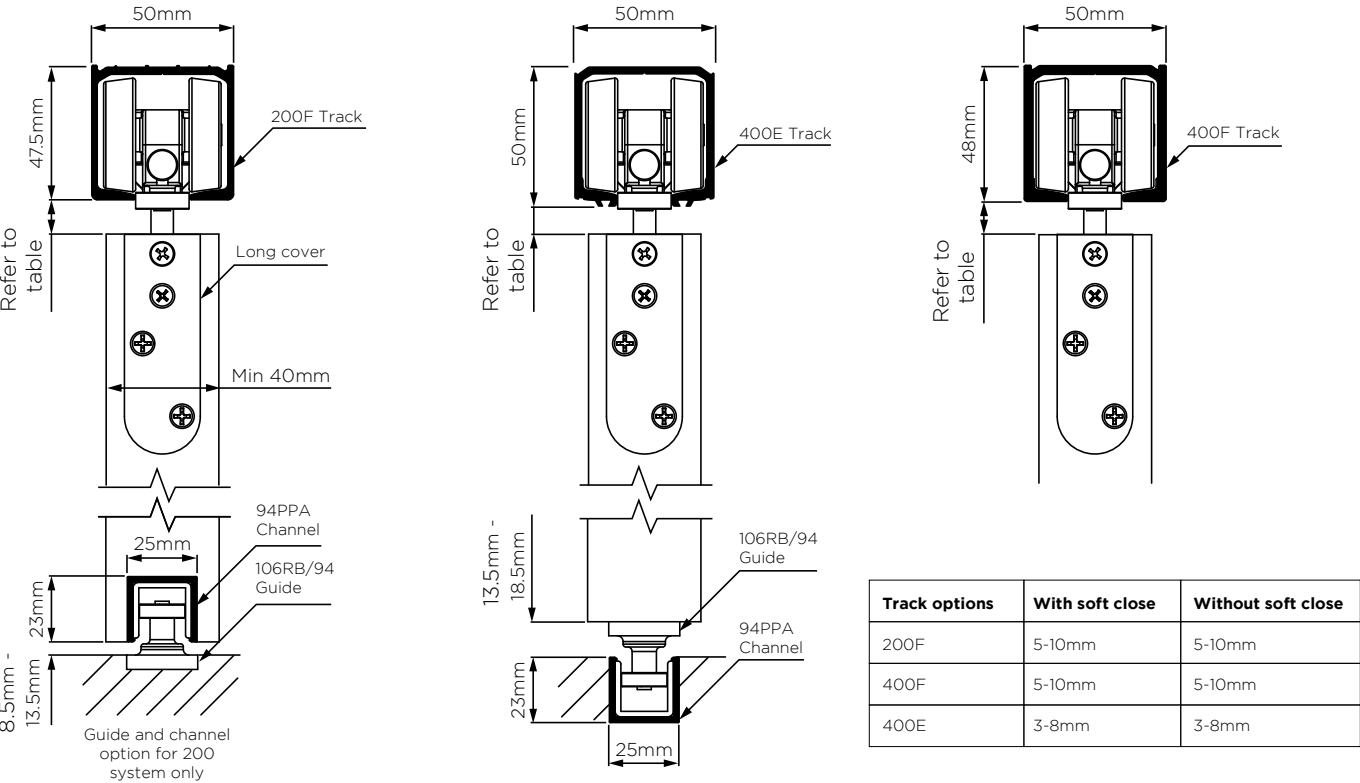


7.2 Slide out the hanger assembly out of the retainer



Repeat on the other side

8. System overview



Care and maintenance

General

Inspect all fixing bolts for tightness every six months, including those securing brackets. Tighten if necessary. Routinely check for wear and if excessively worn, the part should be replaced.

To help prevent surface corrosion, wash regularly with soap or mild detergent and warm water followed by rinsing with clean cold water and dry.

Track

Keep track free from obstruction and excessive dirt or water. Visible surfaces should be cleaned using a damp cloth and mild detergent, then wiped dry.

Hangers

All hangers are fitted with lubricated ball-bearings, requiring no greasing. If doors 'settle' and door clearance is reduced causing friction, raise the door by the hanger adjustment nuts. Wash as per the above recommendation and apply a light application of corrosion preventative to all surfaces, using a dry cloth to remove excess.

Guides

Guide roller and guide channel must be kept clear and free of obstructions. Wash as per the above recommendation and apply a light application of corrosion preventative to all surfaces, using a dry cloth to remove excess.



Brio Australia
1800 098 094
info.au@allegion.com
www.brio.com.au

Brio NZ
+64 9 829 0550
nzinfo@allegion.com
www.brionz.com